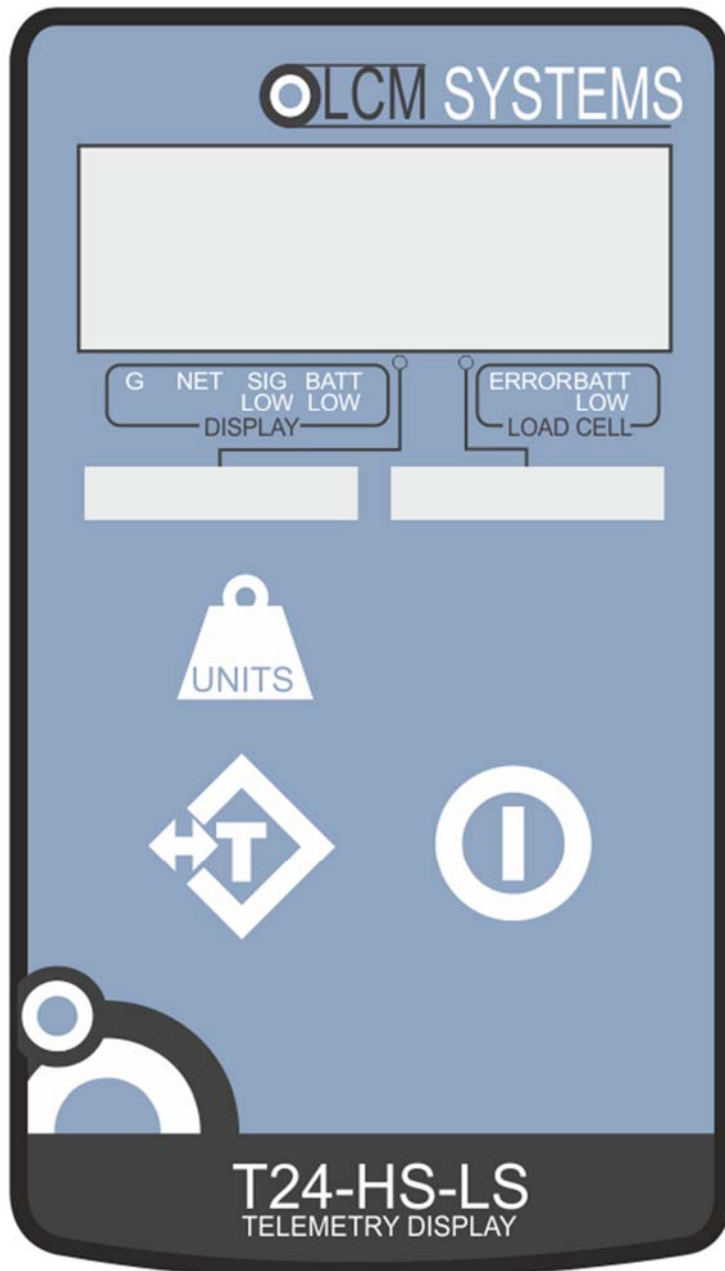


## Addendum To The T24 Telemetry User Manual For The T24-HS-LS Handheld Display.

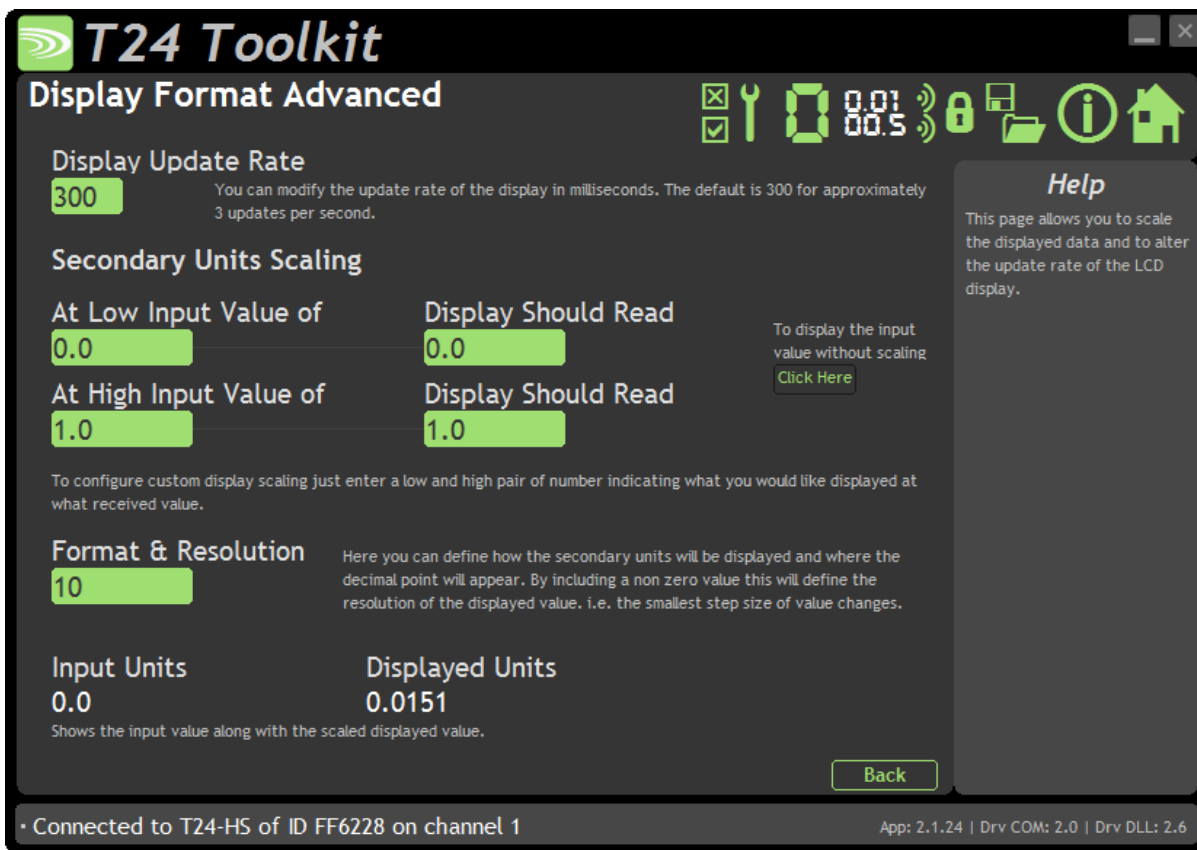
For all settings for the T24-HS-LS see the **T24 Telemetry User Manual** section for the T24-HS. The additional information for the T24-HS-LS is given below:

### Units Button

The T24-HS-LS has a Units button which allows the user to swap between two different measurement units. The two windows just above the Units button show which two units can be displayed. An arrow in the display shows which units are currently selected.



## Display Format Advanced Settings



Here you can adjust the display update rate and also scale the secondary display units. This may be used, for example, to show the data from a T24-SA in tonne as the primary unit and pounds as the secondary unit.

### Items you can change:

Display Update Rate

Enter the interval in milliseconds between display updates. The default is 300 milliseconds. i.e. 3 updates per second.

Secondary Units Scaling

This can be used to change the displayed value to a different unit when the units button is pressed. You simply enter the original and required values at a low and high point.

Example: If a T24-SA was supplying data in tonnes and you wanted the display to show pounds as the secondary unit. You would keep both the low points at zero. Enter **At High Input Value** of 1 and **Display Should Read** Value of 2204.6.

Format & Resolution

Define the display resolution of the secondary units.

**SCIGATE AUTOMATION (S) PTE LTD**  
No.1 Bukit Batok Street 22 #01-01 Singapore 659592  
Tel: (65) 6561 0488 Fax: (65) 6562 0588  
Email: sales@scigate.com.sg Web: www.scigate.com.sg  
Business Hours: Monday - Friday 8.30am - 6.15pm